

AIR POWERED CHAIN SAW

**1P14**

PARTS MANUAL

**ARROW-MASTER  
INCORPORATED**



**ARROW**

**MASTER**

**ARROW-MASTER, INCORPORATED**

1201 Seventh Street • East Moline, IL 61244

## STORAGE DATA

### Storing the Saw

Before storing the saw protect the guide bar by cleaning it with detergent, then drying and oiling it. The chain should be submerged in oil or wrapped in oiled paper to prevent rust. Coat the sprocket with oil. Lubricate the air motor.

## SERVICE AND REPLACEMENT PARTS

For normal servicing of your Model 1P pneumatic chain saw contact your dealer. Replacement parts are generally available from your dealer.

Where local service is not available, replacement parts may be obtained directly from the factory. Please specify the part number, description, and model number as shown in the Illustrated Parts Section. Include the serial number of your tool. Do not use key numbers.

Where factory service is required, please send inquiries on service and parts to:

### **ARROW-MASTER INCORPORATED**

**1201 7TH STREET**

**EAST MOLINE, IL 61244**

**phone: 309-752-1341**

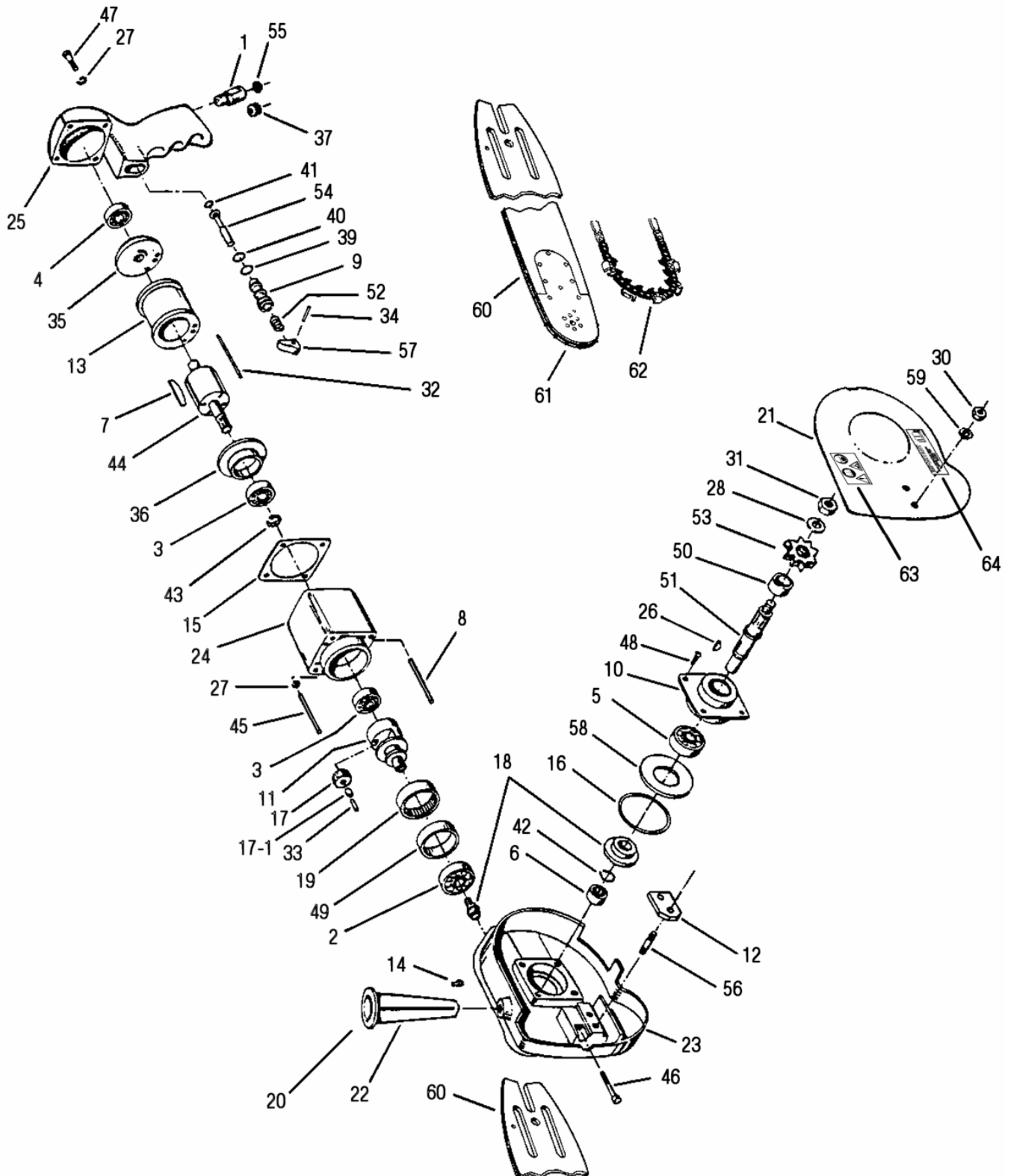
**e-mail: [ps@arrowmaster.com](mailto:ps@arrowmaster.com)**

**website: <http://arrowmaster.com>**

**DO NOT USE KEY NUMBERS WHEN ORDERING SERVICE PARTS. ALWAYS ORDER COMPONENTS BY PART NUMBER AND DESCRIPTION. INCLUDE MODEL AND SERIAL NUMBER.**

**Figure 5-1**  
**CHAIN SAW ASSEMBLY**  
**(56962 Ref.)**

DO NOT USE KEY NUMBERS WHEN ORDERING SERVICE PARTS. ALWAYS USE PART NUMBERS PER ILLUSTRATED PARTS LIST.



## CHAIN SAW ASSEMBLY

ITEM	PART NO.	QTY.	DESCRIPTION	ITEM	PART NO.	QTY.	DESCRIPTION
1	24255	1	Adapter	29	M8851		Grease, Lithium Base (Not Shown)
2	22543	1	Bearing, Ball, Gear Set	30	42808	2	Nut, Hex, .31-24, Guard
3	20242	1	Bearing, Ball, Housing, Motor Plate, End, Front	31	103144	1	Nut, Hex, .50-20, Sprocket
4	20232	1	Bearing, Ball, Housing, Throttle	32	24114	1	Pin, Locating
5	22533	1	Bearing, Ball Spindle	33	24118	2	Pin, Gear
6	76996	1	Bearing, Roller (Shown Assembled)	34	44279	1	Pin, Roll
	104989	1	Plugs, Expansion (Shown Assembled)	35	24106	1	Plate, End, Back
7	24109	4	Blade, Rotor	36	24107	1	Plate, End, Front
8	24724	2	Screw, Machine - 10-24 X 4.50	37	24198	1	Plug, Pipe
9	24853	1	Bushing, Valve	39	24859	1	Ring, "O", Bushing, Valve
10	24679	1	Cap, Bearing	40	38103	1	Ring, "O", Stem, Valve, Front
11	24687	1	Carrier, Gear	41	44859	1	Ring, "O", Stem, Valve, Rear
12	24684	1	Clamp	42	27866	1	Ring, Retaining
13	24102	1	Cylinder, Motor	43	22319	1	Ring, Snap
14	31604	1	Fitting, Hydraulic	44	24108	1	Rotor, Motor
15	44202	1	Gasket	45	24723	2	Screw, 10-24 X 3.25, Housing Motor
16	24686	A/R	Gasket .003	46	30441a	1	Screw, Adjusting, Housing Gear
	24686a	A/R	Gasket .005	47	101129		Screw, FIL-HD, 10-24 X .88, Cap
	24686b	A/R	Gasket .030	48	101127b	4	Housing, Throttle Screw, FIL-HD, 10-24 X .63, Cap
17	24116	2	Gear ASSY, Includes:			4	Bearing
17-1	27928	1	Bearing, Roller	49	24688	1	Spacer, Carrier, Gear
18	24678	1	Gear, Set	50	24689	1	Spacer, Sprocket
19	24694	1	Gear, Spur, Internal	51	24692	1	Spindle
20	M46059	1	Guard, Handle, Front (Not Shown)	52	44473	1	Spring, Compression
	HF7-28c	1	7/16-20 X 3 1/2" Hex Hd. Cap Screw (Not Shown)	53	90029	1	Sprocket
	WP-7C	1	7/16 SAE Flatwasher (Not Shown)				
21	24691	1	Guard, Sprocket	54	24854	1	Stem, Valve
22	15339b	1	Handle	55	24659	1	Strainer
23	24651	1	Housing, Gear	56	13307	2	Stud
24	24701	1	Housing, Motor	57	24210	1	Trigger
25	44201	1	Housing, Throttle	58	24693	1	Washer, Gear Set
	M46060	1	Rear Guard (Not Shown)	59	103673	2	Washer, Nut, Guard
26	104368	1	Key, Woodruff	60	90528	1	Model 1P - Blade Bar Assembly (Includes Item 61)
27	WLM-3C	-	#10 Lockwasher	61	M48545	1	Sprocket Nose Assembly
		4	Housing, Motor	62	91058	1	Model 1P - Chain, .404 Pitch
		4	Housing, Throttle	63	M48931	1	Decal - Warning
				64	M29938	1	Decal - Read Instructions