

UNILIFT

538

Personnel Aerial Lift & Universal Crane

**FIELD PROVEN
PRODUCTIVITY**



Features:

- 36 feet working height
- Power Jack Setup Option
- Effective 360° Coverage
- Superior stability
- Weighs under 3000 lbs.



**A PRODUCT OF
LDC INDUSTRIES, INC.**

1201, 7th Street
East Moline, IL 61244-1465
PH (309) 752-1345
PH (800) 325-4151
Fax (309) 752-1380
www.arrowmaster.com/LDC

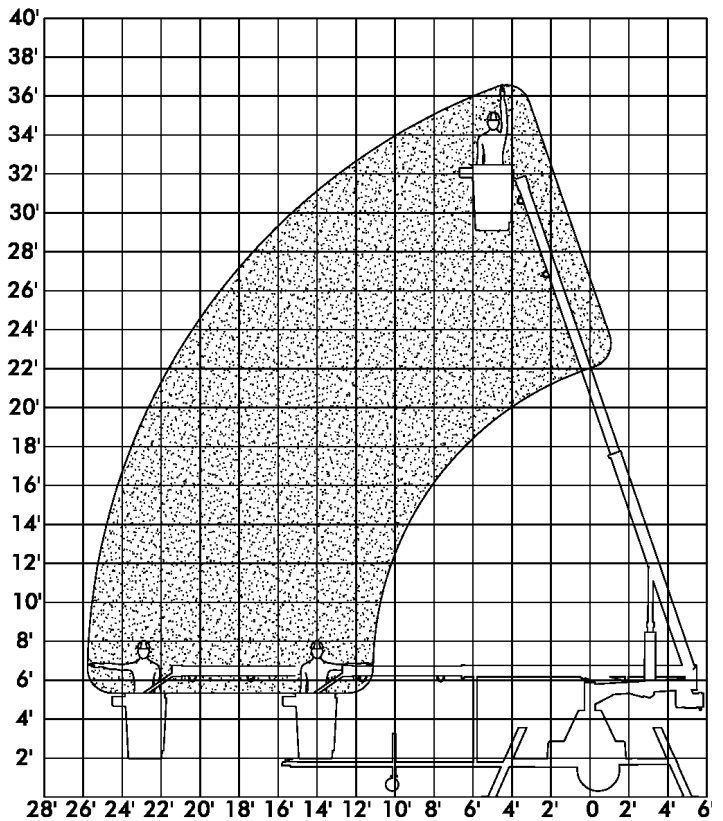


MODEL 538

Personnel Aerial Lift and Universal Crane
(Non-Insulated Telescopic Boom Lift)

SPECIFICATIONS

Working Height - Max.	
Personnel Lift	36' (11.00 m)
Universal Crane	31' (9.45 m)
Platform Height	30' (9.14 m)
Platform Reach from Center of Rotation	
Personnel Lift	24' (7.32 m)
Universal Crane	21' (6.40 m)
Outrigger Spread	11'-1" (3.38 m)
Stowed Travel Height	6'-6" (1.98 m)
Stowed Travel Width	6'-4" (1.93 m)
Stowed Travel Length	22' (6.71 m)
Rated Load Capacity	300 lbs. (136 kg)
Rotation	350°
Shipping Weight	2950 lbs. (1340 kg)
Normal Operating Pressure	700 psi (4.83 MPa)
Tongue Weight	140 lbs. (64 kg)



STANDARD FEATURES

- ◆ Crank or jack outriggers
- ◆ Leveling safety switch
- ◆ Trailer frame with 3500 lbs. (1589 kg) single axle
- ◆ P205-75R14 radial tires
- ◆ 2" (50.8mm) ball coupler
- ◆ 6-volt, 275 amp/hr, deep-cycle batteries
- ◆ Built-in 30-amp charger with automatic shut-off
- ◆ Fiberglass bucket (gravity-leveling, hydraulically dampened) with body harness and lanyard
- ◆ Effective 360° coverage
- ◆ Emergency controls at bucket and base
- ◆ Removable bucket for crane conversion.

OPTIONS

- ◆ Power Jack Setup
- ◆ Surge Brakes
- ◆ Crane load lifting bail and holder
- ◆ Spare Tire Carrier
- ◆ 25 ft. (7.62 m) truck power cord assembly
- ◆ Trailer power cord assembly

LDC INDUSTRIES, INC. reserves the right to make improvements in design and changes in specifications at any time without notice and without obligation as to units already sold. All products and equipment shall be used or offered for sale only where permitted by law or governmental regulations, codes or ordinances and shall be used in strict conformity therewith and for the purposes and in the manner as may be prescribed therein, and in conformity with safe practices.

LDC INDUSTRIES, INC.

1201 7th Street
East Moline, Illinois 61244-1465
Phone No. (309) 752-1345 (800) 325-4151
Fax No. (309) 752-1380
web site: www.arrowmaster.com/LDC

EFFECTIVE March 1, 2010